



**SOUTHWEST
IDAHO AHEC**

*Students, Professionals,
Community*



Idaho Interprofessional Student Conference on Opioid Education

August 9 and 10, 2019

Boise State University

Jordan Ballroom



Conference Agenda

FRIDAY

12:00 – 12:30 pm	Registration
12:30 – 12:45 pm	Welcome & Introduction, Katrina Hoff, Southwest Idaho Area Health Education Center (AHEC) and Phil Ford, Boise State University (BSU) College of Health Sciences
12:45 – 1:45 pm	State of the State: The Idaho Opioid Epidemic, Amy Jeppesen, LCSW, ACADC, Recovery4Life
1:45 – 2:45 pm	Opioids 101: Intro & Treatment Options, Cathy Oliphant, PharmD, Idaho State University
2:45 – 3:00 pm	Break
3:00 – 4:30 pm	ECHO Idaho Demonstration, Lachelle Smith, ECHO Idaho Director; Coire Weathers, MD; Brenda Hoyt, NP; Cathy Oliphant, PharmD; Amy Jeppesen, LCSW
4:30 – 6:30 pm	Reception & Exhibits

SATURDAY

8:00 – 8:30 am	Breakfast
8:30 – 10:00 am	The Opioid Epidemic: How Did We Get Here? D. Lee Binnion, MD, Saint Alphonsus Regional Medical Center Emergency Medicine
10:00 – 10:10 am	Break
10:10 – 11:10 am	Alternatives to Pain Medications and Role of Rehabilitation Therapies, Megan Doyle, MS, OTR/L and Kelly Jorschumb, MPT, COMP, St. Luke's Rehabilitation
11:10 am – 12:30 pm	“The Providers” Documentary Viewing/Discussion, Connor Brown, Student, UW School of Medicine, WWAMI Program
12:30 – 1:30 pm	Lunch
1:30 – 2:30 pm	National Perspective on the Opioid Crisis, Randy Hudspeth, PhD, MBA, MS, APRN-CNP/CNS, Idaho Center for Nursing
2:30 – 2:40 pm	Break
2:40 – 3:40 pm	Opioids: Knowledge & Attitudes Among Southeast Idaho Latinos, Dr. H. Cathleen Tarp, PhD, MPH; Bryce Turner and Selene Ortiz
3:40 – 4:40 pm	National AHEC Overview & AHEC's History in Idaho, Katrina Hoff, SW ID AHEC; Liz Bryant, N ID AHEC; Rylee O'Neill, SE ID AHEC



State of the State: The Idaho Opioid Epidemic



What are the current trends in use, and what populations are most affected by the opioid epidemic in Idaho? How is the state handling this problem, and what are the treatment options that appear to be working?

Amy Jeppesen, LCSW, ACADC, is the owner and executive director at Recovery4Life. She graduated in 1998 with honors from Brigham Young University and has more than 21 years of experience in addiction counseling.

Opioids 101: Introduction and Treatment Options

The pathway to addiction may begin with an opioid prescribed for pain. Learn about the various classes of opioids, agents used in medication-assisted therapy (MAT) and naloxone, a life-saving medication.

Cathy Oliphant, PharmD, is a professor at Idaho State University College of Pharmacy and interim chair of the Department of Pharmacy Practice. She earned her Doctor of Pharmacy degree at the University of Michigan.



ECHO Idaho uses video conferencing to link community providers with specialist teams for interactive learning and mentoring. The ECHO Idaho Opioid Program helps clinicians learn best practices for treating patients with chronic pain or opioid use disorder, connect with peers around the state, and get feedback on difficult patient cases from a panel of specialists.

Demo: Lachelle Smith, MPP, ECHO Idaho Director; Coire Weathers, MD; Brenda Hoyt, NP; Cathy Oliphant, PharmD; Amy Jeppesen, LCSW



Reception

The Friday evening reception offers the chance to mingle with interprofessional peers and mentors, engage with event sponsors and exhibitors, and win cool prizes! Enjoy a delicious spread of hearty appetizers and refreshing beverages, while enjoying music and lively conversation about conference topics and educational studies.

Exhibitors

Optum Idaho
Saint Alphonsus Health System
Regence Blue Shield of Idaho
Project ECHO/University of Idaho
Nurse Leaders of Idaho
Drug Overdose Prevention Program
Idaho College of Osteopathic Medicine
Idaho Nurses Association

ISU Kasiska Division of Health Sciences
ISU College of Health Professions
Idaho Area Health Education Centers
Family Medicine Residency of Idaho
Idaho Office on Drug Policy
Idaho Rural Health Association
Area 3 Senior Services Agency
Nurse Leaders of Idaho

Presenting & Host Sponsors



The Southwest Idaho Area Health Education Center (SW ID AHEC) is part of a nation-wide system of programs created to improve the distribution, diversity and supply of the primary healthcare workforce, with a special emphasis on meeting the needs of rural and underserved areas. Our projects focus on health careers pathways, community-based experiential learning, and continuing education.



The College of Health Sciences at Boise State University is dedicated to providing programs of educational excellence for professionals who advance life-long health in global communities. Our programs are solidly based in multi-disciplinary experiences formed by active collaboration of faculty from within the college and community partners. Programs include online education and on-campus learning.



The Opioid Epidemic: How Did We Get Here?

This presentation will cover a short history of opioids, including when the U.S. changed its view of pain, how Pharma fueled the fire, and what happened when heroin entered the scene. Why didn't we know? What can you do now? Learn to stand against addiction stigma and be part of a community solution.

D. Lee Binnion, MD, is an emergency physician at Saint Alphonsus Regional Medical Center in Boise, Eagle and Nampa. She serves on the Saint Alphonsus Health System Opioid Stewardship Team and is the Nampa Center's trauma director.



Alternatives to Pain Meds and the Role of Rehab Therapies

Getting physical therapy first for musculoskeletal pain can lead to a significant reduction in opioid and healthcare utilization while still improving patient outcomes. Learn about the biopsychosocial model of pain and integration of non-pharmacological treatment methods.

Kelly Jorschumb, MPT, COMT, FAAOMPT, OCS, CSCS, is a physical therapist and adjunct faculty at ISU; and Megan Doyle, MS, OTR/L, TPS, Cert-APHPT, is an occupational therapist and certified therapeutic pain specialist. Both work at St. Luke's Rehabilitation.



Facilitator: Connor Brown, UW School of Medicine, WWAMI Program

Does your zip code determine your life? **The Providers** gives a very human face to the physician shortage and opioid epidemic in rural America, following three healthcare professionals who are doing everything they can to make a difference in northern New Mexico at El Centro, a group of safety-net clinics that offer care to anyone who walks through the doors.



National Perspectives on the Opioid Crisis



A discussion of the national response to mitigate the opioid crisis and how the focus has shifted from law enforcement to healthcare providers. Explores the impact of national guidelines on clinical practice and the regulatory response to opioid crisis management.

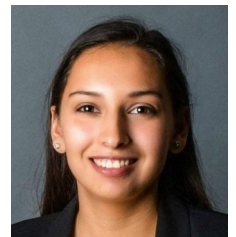
Randall Hudspeth, PhD, MBA, MS, APRN-CNP/CNS, FAANP, is the executive director for the Idaho Center for Nursing. He was a nurse practitioner at Saint Alphonsus and director of pain management services there.

Opioids: Knowledge & Attitudes Among Idaho Latinos



A student research project studied attitudes and knowledge about opioids, barriers to receiving treatment for opioid addiction, and effective strategies to raise awareness in this population.

Helen Cathleen Tarp, PhD, MPH, is associate professor in the Department of Global Studies and Languages at Idaho State University. Undergraduate researchers Selene Ortiz and Bryce Turner are both students at ISU.



*Katrina Hoff, director
SW Idaho AHEC*



*Liz Bryant, director
N Idaho AHEC*



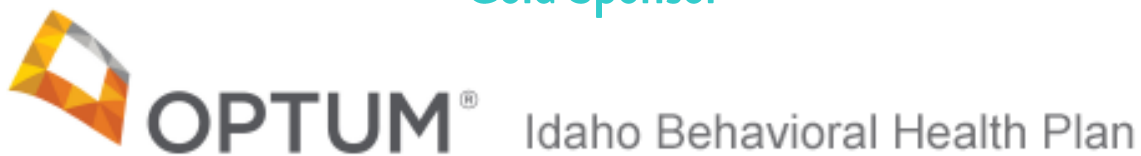
*Rylee O'Neill, director
SE Idaho AHEC*

Idaho's three Area Health Education Centers have a rich history, both as part of the national AHEC system, and in association with the University of Washington WWAMI Program. Learn about SW Idaho AHEC, N Idaho AHEC and SE Idaho AHEC efforts to connect students to careers, professionals to communities, and communities to better health, especially in rural and underserved areas of the state.



Thank You to Our Sponsors

Gold Sponsor



Silver Sponsors



Bronze Sponsors





SOUTHWEST IDAHO AHEC

*Students, Professionals,
Community*

Katrina Hoff, director
1607 W. Jefferson Street * Boise, ID 83702
(208) 947-4295 or khoff@jannus.org
www.idahoahhec.org

This project is/was supported by the Health Resources and Services Administration (HRSA) of the U.S. Department of Health and Human Services (HHS) under grant number U77HP03022, for the WWAMI Area Health Education (WWAMI AHEC) Program Office and its five regional Centers in the total amount of \$639,012 for the 2018-19 fiscal year (with a 1:1 total match of \$639,012 from non-federally funded governmental sources). This information or content and conclusions are those of the author and should not be construed as the official position or policy of, nor should any endorsements be inferred by HRSA, HHS or the U.S. Government.