



**Connecting Students to Careers, Professionals to
Communities, and Communities to Better Health!**

Our Christmas Wishes Came True

We would like to wish each and every one of you a joyous and restful holiday season. We at SW ID AHEC had a wonderful season spent with our loved ones near and thinking of our loved ones afar. Best of all, our Christmas wish came true...we have a full cohort of incoming 2022 - 2024 AHEC Scholars! These scholars will begin their didactic learning in the third week of January where they will be joined by AHEC Scholars across the entire state of Idaho. Meet our scholars below and stay tuned to learn more about each of them;

- Alexandria Ahlm, Medicine, Pacific Northwest University
- Angie Apreotesi, Physician Assistant, ISU
- Samantha Carson, Medicine, Full Circle Health
- Mariah Guzman, Nursing, BSU
- Kennedy Hagen, Physician Assistant, ISU
- Amanda Hamann, Nursing, ISU
- David Li, Medicine, ICOM
- Carissa McEwen, Nursing, BSU
- Savannah Moore, Medicine, ICOM
- Amy Pelz, Physician Assistant, ISU
- Kelli Rich, Nursing, ISU
- Daniel Rotante, Medicine, ICOM
- Karen Silva, Physician Assistant, ISU
- Jackson Thennis, Medicine, ICOM
- Marisa Vander Feen, Medicine, ICOM
- Peyton Vasquez, Physician Assistant, ISU
- Krystan Welborn, Physician Assistant, ISU
- Sara Williams, Physician Assistant, ISU
- Baylee Zanone, Physician Assistant, ISU

Happenings at SW ID AHEC Medical Education!

In 2019 there were 1,752,735 new cancer cases and 599,589 deaths (CDC update on cancer deaths). The annual mortality from cancer has dropped by 27% over the last 20 years. (CDC report 2/2022). Attend [A Medical Symposium on Emergencies on Neoplasia](#) that will explore the improvements in cancer therapy responsible for this decrease.

Join the Ada County Medical Society for [Winter Clinics](#), one of Idaho's longest-running medical education events. This family-friendly "SKI-M-E" retreat will provide you with an opportunity to connect with your family and colleagues while you learn about a variety of topics in a beautiful setting on the lake. Log in to your CloudCME account to learn more.

Have you missed our special series on Putting the Mouth Back in the Body? Don't worry, there are more sessions coming up! We will present the fourth in a series of eight seminars on January 15th. The session, [From the Mouths of Moms to the Mouths of Babes: The Importance of Maternal, Infant, and Child Oral Health](#), will be presented by Colleen Stephenson, RDH-ER, MS. See below for more details and registration information.


Keep your eyes peeled for our January newsletter for an exciting announcement regarding our upcoming SW ID AHEC Medical Education Wednesday Series!


REGISTER NOW FOR

Session Four of the Eight-Part Series, Putting the Mouth Back
in the Body: How Oral Health Affects Whole Patient Care

FROM THE MOUTHS OF MOMS TO THE MOUTHS OF BABES: THE IMPORTANCE OF MATERNAL, INFANT, AND CHILD ORAL HEALTH



Earn CME Credits 

Free Registration 

Via Zoom 

REGISTER



NOW

JANUARY 18, 2022
12 - 1 PM MT

FEATURING

COLLEEN STEPHENSON
RDH-ER, MS



**Boise State University News &
Updates**



BOISE STATE UNIVERSITY

Boise State Hosted Statewide Forum Supporting
Rural Teachers and Students



The Rural Education Collaborative, one of Boise State's **Vertically Integrated Projects**, held a forum on campus last month with both physical and Zoom participants to dissect and discuss education for rural Idaho students.

Notable panelists included Interim State Superintendent of Public Instruction Debbie Critchfield, Idaho State Board of Education President Kurt Liebich, and Idaho State Board of Education Chief Planning and Policy Officer Tracie Bent. These leaders in education held their panel about underserved and rural educators and the help they need to better serve their students. [Read More.](#)

Nursing Students Serve Treasure Valley Through Community Projects

Unlike many nursing classes that focus on **acute care**, Boise State's Community and Population Health Nursing course introduce students to a whole other side of nursing. Students discover the vital roles nurses can play in the community.

They also take on projects in the community using a **Service-Learning approach** in partnership with Boise State's Service-Learning program. [Read More.](#)

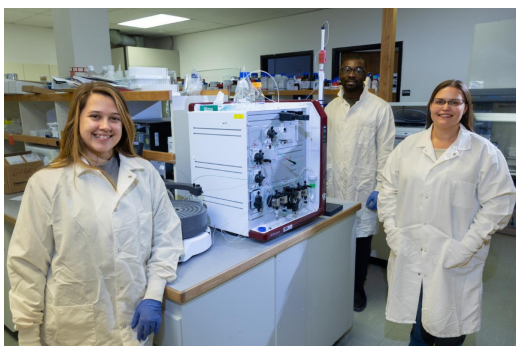
Idaho State University News & Updates



Idaho State to Receive \$3 Million Grant to Establish Community Health Worker Collaborative Program

Idaho State University is set to receive nearly \$3 million over several years to establish a Community Health Worker Collaborative program for the state, designed to grow the community and public health workforce.

Idaho State is one of four grantees in the Northwest and the only awardee in Idaho. The U.S. Department of Health and Human Services awarded 83 grantees across the nation a total of \$225.5 million through the Health Resources and Services Administration to fund the Community Health Worker Training Program. [Read More.](#)



Micronutrient Research at Idaho State University May Help Combat Antibiotic-Resistant Bacteria

How the human body can gain the upper hand in its battle with bacteria for micronutrients is the focus of some new research by an Idaho State University biologist.

Julia Martin, associate professor in the Department of

Biological Sciences, was recently awarded a more than \$400,000 grant from the [National Institutes of Health](#). Over the next three years, Martin and students working in her lab will be looking into how fluctuations in the supply of micronutrients - specifically manganese, zinc, and calcium - to *streptococcus pneumoniae* affect the bacteria's physiology. [Learn More](#).

Idaho College of Osteopathic Medicine News & Updates



Nutrition Meets Health in ICOM's New Culinary Medicine Course

From the classroom to the kitchen, a new course at ICOM is giving medical students an opportunity to learn about the interplay between nutrition, medicine, and patient care. The College's Culinary Medicine course made its debut in late October and provides in-the-kitchen instruction to guide medical students in

improving health with food. [Read More](#).

SGA Opens On-Campus Food Pantry for Students

The Idaho College of Osteopathic Medicine has found a new way to support its students outside of the classroom.

The College's Student Government Association (SGA) spearheaded the opening of an on-campus food pantry to help tackle "food insecurity" — meaning the lack of reliable access to sufficient, nutritious food. [Read More](#).



ICOM, IUI Host 4th Annual AUA Guidelines Video Competition

For the fourth consecutive year, medical students at the Idaho College of Osteopathic Medicine (ICOM) had the opportunity to participate in an AUA Guidelines Video competition organized by Idaho Urologic Institute (IUI).

Over the last several months, groups of second-year medical students worked together to demonstrate their proficiency in producing patient-friendly content in the form of informational videos pertaining to current urological guidelines, including a comprehensive critical evaluation of current literature. [Read More](#).

Wendy Jaquet Highlights Rural Physician Shortage

According to America's Health Rankings, Idaho ranks 43rd for the number of primary care physicians per capita. In her most recent work, Wendy Jaquet, former Idaho Legislature and Idaho WWAMI Advisory Board member says, "recruiting and retaining doctors [in Idaho] is an all-hands-on-deck situation."



Addressing the need to increase the rural physician pipeline in Idaho, Idaho WWAMI, the public medical school partnership between the University of Idaho and the University of Washington School of Medicine is the only publicly-supported medical school in Idaho that trains the next generation of physicians.

By investing in making medical school accessible to more Idaho students, we're working towards creating the next generation of physicians that will help meet the healthcare needs of Gem State residents, today and tomorrow. [Read More.](#)

Dr. Freeman and Dr. Lima Honored As Women of the Year

We would like to highlight Dr. Lynda Freeman and Dr. Ann Lima for being named one of 50 women of the year by the Idaho Business Review's 2022 Women of the Year Honorees. This award recognizes trailblazing women from all over the state. [Read More.](#)

ECHO Idaho Launches New Series Focused on Alzheimer's Disease and Related Dementias



In January, [ECHO Idaho](#) will launch an education series dedicated to [Alzheimer's Disease and Related Dementias](#). The series will provide Idaho healthcare professionals the opportunity to learn best practices in identifying, treating, and managing brain health and other dementia-related concerns in geriatric patients. The new series convenes the fourth Wednesday of each month, from 1-2 p.m. Mountain time, beginning Wednesday, January 25, 2023. [Add it to your calendar](#) and [register today](#).

Free Autism Health Care Training Resources: Get STAT-Certified and Earn CME with ECHO Idaho

The Screening Tool for Autism in Toddlers and Young Children ([STAT](#)) can help qualified health care professionals diagnose autism in young children. ECHO Idaho is offering MDs, DOs, NPs, and PAs the opportunity to receive their STAT certification training and participate in a quality improvement cohort that is eligible for continuing medical education credits (MOC-Part IV or AAPA Category 1 PI). Requirements and commitment information for both these valuable opportunities are available [on the ECHO Idaho website](#). Space is limited, so [sign up today!](#)

Receive Mental Health Legislative Updates from Empower Idaho

The Empower Idaho Legislative Update Newsletter exists to inform our network about legislative updates and news concerning behavioral health and substance use.

The 2023 Legislative session begins on Monday, January 9, 2023. Subscribe to the Empower Idaho Legislative Newsletter today to receive weekly updates throughout the session! [Sign up](#).



Idaho Rural Health Association Honors Idaho Rural Health Heroes at Annual Awards Celebration on November 17, 2022



Sixteen Idaho health professionals and organizations received an Idaho Rural Health Hero Award at the Idaho Rural Health Association Annual Meeting and Awards Reception on November 17, 2022. Read the stories of all the 2022 Idaho Rural Health Heroes at idahorha.org.

The awards are given on National Rural Health Day in Idaho to recognize rural health educators, community advocates, healthcare providers, and program administrators who demonstrate outstanding service and dedication to rural communities. Nominations described the many contributions of this year's awardees as advocates, educators, collaborators, and innovators. Read more about the sixteen awardees [here](#).

2022-2023 Regional Trainings for Childcare Providers Helping Kids Have Healthy Mouths



The Idaho Oral Health Alliance, in partnership with Delta Dental of Idaho, Idaho Public Health Districts, Idaho Office of Head Start Collaboration, Idaho Division of Maternal and Child Health, and IdahoSTARS, is offering free training for childcare providers including Head Start teachers, Parents-As-Teachers, and Nurse-Family Partnership providers.

The free four-hour training is based on the Cavity Free Kids curriculum of the ARCORA Foundation. Licensed Idaho dental hygienists will present the material and demonstrate interactive activities to be used with children. Tips for pregnant women will be included, too. Cavity Free Kids is designed for use in early childhood education settings and home visiting programs.

Training will focus on the 5 Basics of Oral Health:

1. Baby Teeth are Important
2. Water for Thirst
3. Tooth Healthy Foods
4. Brush, Floss, Swish
5. Going to the Dentist

Training will take place at and on the following locations and dates;

- Lewiston, January 6, 2023
- Coeur d'Alene, January 7, 2023
- Twin Falls, January 21, 2023
- Pocatello, Feb. 11, 2023

Idaho Primary Care Office Opens State Loan Repayment Program



IDAHO DEPARTMENT OF
HEALTH & WELFARE

The State Loan Repayment Program (SLRP)

allows for the participation of full-time practitioners working 40 hours per week in a nonprofit or public entity located in federally-designated Health Professional Shortage Areas (HPSA). The clinician is required to work a minimum of 45 calendar weeks (Sunday – Saturday) per year and may receive up to \$25k per year (depending on debt amount and award selection).

Practitioners receiving loan repayment must:

- Ensure individuals at or below 200% of the HHS Poverty Guidelines will receive a schedule of discounts, and individuals with income at or below 100% of the HHS Poverty Guidelines will receive services at a nominal fee or at no charge;
- Commit to fulfilling a service obligation at the practice location and agree to substantial repayment penalties if the term of service is not completed (minimum 2-year service obligation);
- Accept Medicare, Medicaid, and the Children’s Health Insurance Program

The State Loan Repayment Program application is open through **Monday, January 2nd, at 5:00 p.m. MT.**

Free Virtual Training- COVID-19 Update with Spanish-Speaking Medical and Outreach Specialists

The Division of Public Health, Idaho Department of Health and Welfare is sponsoring a free webinar, “**COVID-19 Update with Spanish-Speaking Medical and Outreach Specialists**” facilitated by MD Translation, **December 9, 2022, 12:00-1:00 Mountain Time.** Spanish interpreters and bilingual staff will learn strategies and interventions to overcome language and cultural barriers that have put certain groups at higher risk for diseases like COVID-19.

Pre-registration is required and space is limited, [register now.](#)

Funding for this webinar is made possible by the Centers for Disease Control and Prevention, Idaho Initiative to Address COVID-19 Health Disparities, OT21-2103. For questions, please email projects@MDtranslation.com.

Idaho HOSA Looking for Volunteers for the 22nd State Leadership Conference



Idaho HOSA-Future Health Professionals will be hosting their twenty-second State Leadership Conference, from March 8th-10th at Idaho State University in Pocatello, Idaho. We are currently looking for volunteers to judge competitive events, where members from around the state have the ability to showcase skills that they have learned in the classroom in a competitive setting. For more information or to help at the conference, please contact Jessie Kellogg at

Jessie.Kellogg@cte.idaho.gov.

Dentists Turn to High Schools to Boost Workforce Amid Staffing Shortage

Idaho's dentists are facing a staffing shortage, and they're turning to local high schools to solve it. In a survey distributed by the Idaho State Dental Association (ISDA), 63% of respondents said staffing issues are their main pain point.

A shortage of dental assistants and hygienists is "greatly reducing access to dental care in the Treasure Valley," said Nollie Haws, senior communications manager for the organization. So some Treasure Valley dentists are turning to dental assistant training programs to help shore up their workforce.

Over the past year, director of the Nampa dental program Lucretia Bollinger worked with Keller to open the **ICAT Dental Clinic** at Skyview High School. "This is the most demand I've ever seen for dental assistants," said Bollinger. "Students can get a job and work and have a career just out of high school. We wanted to open that up even more." [Learn More.](#)

Support Our Center!

SW ID AHEC is a not-for-profit organization. Meaning, that we exist because of the generosity of agencies and individuals. People like you. We know that times are tough but if you find yourself in a stable position and want to support our mission, your donations are always greatly appreciated.

Your Donation Helps To:

- Improve the distribution, diversity, and supply of the primary healthcare workforce
- Educate Idaho's youth about careers in healthcare
- Enhance the education of health profession students
- Offer continuing education to healthcare professionals
- Strengthen community health in rural and underserved areas

**DONATE
NOW**

[Facebook](#)

[Instagram](#)

[Twitter](#)



[Home](#)

[About Us](#)

[Students](#)

[Professionals](#)

[Community](#)

Southwest Idaho AHEC

1607 W. Jefferson Street,
Boise, ID 83702
(208) 947-4295

Katrina Hoff, Director
khoff@jannus.org(208)
947-4295

This project is/was supported by the Health Resources and Services Administration (HRSA) of the U.S. Department of Health and Human Services (HHS) under grant number U77HP000022, for the WWAMI Area Health Education (WWAMI AHEC) Program Office and its five regional Centers in the total amount of \$840,630 for the 2020-2021 fiscal year (with a 1:1 total match of \$840,630 from non-federally funded governmental sources). This information or content and conclusions are those of the author and should not be construed as the official position or policy of, nor should any endorsements be inferred by HRSA, HHS or the U.S. Government.